



MURKAM Usługi Kamieniarsko – Budowlane

Leon Czerwiński

Kawle Dolne 88, 83-304 Przodkowo

NIP 589 001 26 13 tel. 058 685 13 32 fax: 058 685 13 31

e-mail: [murkam@murkam.com.pl](mailto:murkam@murkam.com.pl) www.murkam.com.pl

---

### ***Oland limestone – Solid history***

You come across this stone in such places as monuments of architecture and old town halls, courts and others historical buildings. They were used as construction elements, finishing of stairs, floors and gravestones. It was always a perfect material for sculptures, reliefs, altars as well as ornaments, cutters, rosette, various details. Therefore it is a common material to be used in the conservation of monuments.

Basic colors for oland stone, are:



grey



red

#### DESCRIPTION:

**Limestone** is sedimentary rock only of skeletal fragments of marine organisms such as coral, forams and molluscs major materials are the minerals calcite and aragonite which are different crystal forms of calcium carbonate ( $\text{CaCO}_3$ ). Its resistance to abrasion and hardness makes this material a perfect flooring, stairs. It is easy to maintain and longlasting stone, which becomes even more fine during the years of treatment. Limestone from Sweden, is one of the most often used construction materials in monuments renovation and conservation, similar to brick. It was especially common northern part of Poland.

#### TECHNICAL DATA:

DENSITY: 2721 Kg/m<sup>3</sup>

COMPRESIVE RESISTANCE: 165 MPa

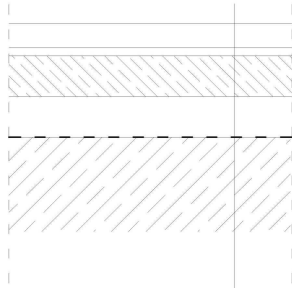
PRESSURE RESISTANCE: 16,7 Mpa

WEARING COEFFICIENT 14,8 cm<sup>3</sup>/50cm<sup>2</sup>

WATER ABSORPTION: 0,18%

Except for flooring it is a very good material for interior finishing elements such as : window sills, steps, stairs, elevations, cut to size, solid thick elements, reliefs, sculptures, curved elements and other decorative massive pieces.

### DETAL PRZEKROJU PRZEZ POSADZKĘ skala 1:10



płytki kamienne gr. 30 mm  
zaprawa klejowa  
warstwa wyrównawcza betonu 50 mm  
izolacja termiczna gr. 50 mm  
izolacja przeciwwilgociowa  
ława fundamentowa

Most common finishing:

1. Antic
2. Polished
3. Honed

In case of exterior stairs, outdoor halls an antislipping finishing is recommended, such as.:

- bushhammered
- flamed
- sandblasted

### EXAMPLES:

Baroc Royal Chappel in Gdańsk.



Gothic Church of St. Mary's in Gdańsk.



Gothic Passionist Order in Przasnysz



Gotic Church of St. Nicholas in Gniew (interior in rokoko style)– floor and mosaik



GOTIC NORBERTINE ORDER IN ŻUKOWO – FLOORING AND OTHER DETAILS

OLIWA ARCHICATHERDRAL – FLOORING AND OTHER DETAILS

GOTIC CHURCH OF OUR LADY OF THE ROSARY IN KOZLINY – FLOORING AND OTHER DATILS

GOTIC CHURCH OF ST. PAUL AND PETER THE APOSTOLS IN TRUTNOWY - FLOORING

GOTIC CHURCH OF ST. VALENTINE IN MATARNIA - FLOORING

....AND FAR MORE EXAMPLES OF OUR WORKS IN HISTORICAL STONE AS RENOVATION IN THE OLD MONUMENTS AS WELL AS CONTEMPORATY BUILDINGS.